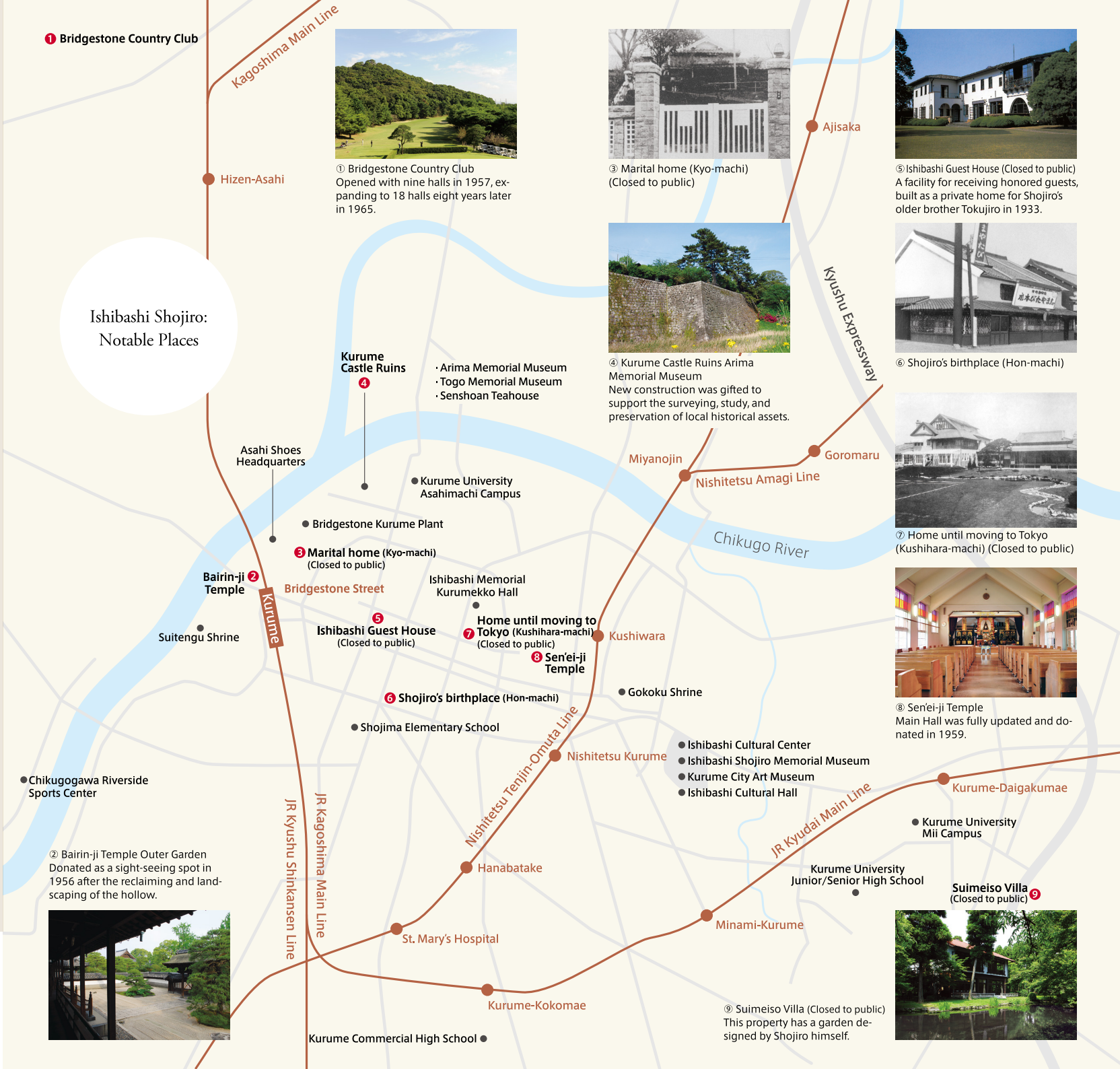
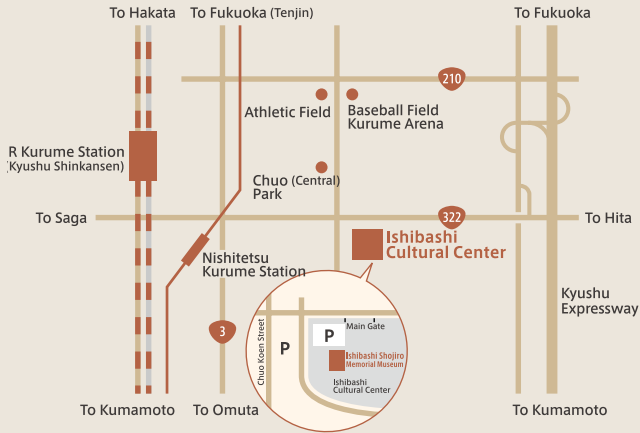


Visitor Information

Open	10:00—17:00 (Last entry 16:30)	
Closed	Mondays (Open if Monday is a national holiday or substitute holiday), Year-end and New Year holidays, maintenance days	
	General / Seniors (65&Up) / University Students	¥300
Entry Fee	High School Students & Younger	Free
*Free for visitors with tickets to the Kurume City Art Museum.		

Access	Plane:	50 min. from Fukuoka Airport by Nishitetsu Highway Bus (Stop: Bunka Center Mae)
	Train:	20 min. by Shinkansen or 40 min. by rapid train from JR Hakata Station to JR Kurume Station 30 min. by limited express or 40 min. by express train from Nishitetsu Fukuoka (Tenjin) Station to Nishitetsu Kurume Station
	Bus:	15 min. from JR Kurume Station, 5 min. from Nishitetsu Kurume Station (Stop: Bunka Center Mae)
	Car:	10 min. from Kurume Interchange (Paid parking at Ishibashi Cultural Center) *Approximate times



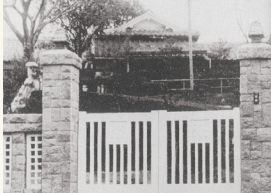
1 Bridgestone Country Club

Hizen-Asahi

Ishibashi Shojiro:  
Notable Places



① Bridgestone Country Club  
Opened with nine halls in 1957, expanding to 18 halls eight years later in 1965.



③ Marital home (Kyo-machi)  
(Closed to public)

Ajisaka



⑤ Ishibashi Guest House (Closed to public)  
A facility for receiving honored guests, built as a private home for Shojiro's older brother Tokujiro in 1933.

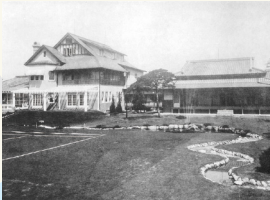


⑥ Shojiro's birthplace (Hon-machi)



④ Kurume Castle Ruins Arima Memorial Museum  
New construction was gifted to support the surveying, study, and preservation of local historical assets.

Kyushu Expressway



⑦ Home until moving to Tokyo (Kushihara-machi)  
(Closed to public)



⑧ Sen'e-i Temple  
Main Hall was fully updated and donated in 1959.

Miyanojin

Nishitetsu Amagi Line

Goromaru

Asahi Shoes Headquarters

Kurume Castle Ruins

• Arima Memorial Museum  
• Togo Memorial Museum  
• Senshoan Teahouse

• Kurume University Asahimachi Campus

• Bridgestone Kurume Plant

Bairin-ji Temple

③ Marital home (Kyo-machi)  
(Closed to public)

Ishibashi Memorial Kurumekko Hall

⑤ Ishibashi Guest House  
(Closed to public)

Home until moving to Tokyo (Kushihara-machi)  
(Closed to public)

⑧ Sen'e-i Temple

• Shojima Elementary School

• Gokoku Shrine

Suitengu Shrine

• Chikugogawa Riverside Sports Center

② Bairin-ji Temple Outer Garden  
Donated as a sight-seeing spot in 1956 after the reclaiming and landscaping of the hollow.



Hanabatake

St. Mary's Hospital

Kurume-Kokomae

Kurume Commercial High School

⑨ Suimeiso Villa (Closed to public)  
This property has a garden designed by Shojiro himself.

• Ishibashi Cultural Center  
• Ishibashi Shojiro Memorial Museum  
• Kurume City Art Museum  
• Ishibashi Cultural Hall

Nishitetsu Kurume

Nishitetsu Tenjin-Omuta Line

Minami-Kurume

Kurume University Junior/Senior High School

Kurume-Daigakumae

• Kurume University Mii Campus

Suimeiso Villa  
(Closed to public)



EN



石橋正二郎記念館

ISHIBASHI SHOJIRO MEMORIAL MUSEUM





# About the Ishibashi Shojiro Memorial Museum

The Ishibashi Shojiro Memorial Museum was donated to Kurume City by the Ishibashi Foundation in November 2016, following the renovation of the Annex of the Ishibashi Museum of Art, to mark the 60th anniversary of the Ishibashi Cultural Center.

Throughout his life, Ishibashi Shojiro worked for the advancement of his hometown of Kurume City, Fukuoka Prefecture. Built to support the growth and cultural enrichment of his birthplace, the Ishibashi Cultural Center has been cherished by many since its opening in 1956, evolving over the years to meet the needs of the times. This memorial museum introduces an array of materials illustrating its development as a hub of arts and culture, as well as the life and character of Ishibashi Shojiro.



## ISHIBASHI Shojiro (1889–1976)

The founder of Bridgestone Tire Co., Ltd. (now Bridgestone Corporation), Ishibashi Shojiro was born in Kurume City, Fukuoka Prefecture in 1889. His passion extended to social initiatives and cultural advancement, and the many facilities and art collections he left behind are still valued today in his hometown of Kurume and around the world.

# Ishibashi Shojiro: A Global Vision Born in Kurume

## Enterprise “Expanding the Enterprise for the Greater Good”

Ishibashi Shojiro took over his family’s tailoring business at age 17, focusing on split-toe *tabi* socks to boost sales and later expanding into rubber shoes. In 1930, he succeeded in producing the first domestically made tires and laid the foundation for what would become Bridgestone, a global leader in its field.

## Education “Helping Shape a Society Rich with Meaning and Wellbeing”

Shojiro engaged in philanthropy throughout his life, endowing schools and museums — gifts that endure as cherished legacies in Kurume and across the world.

## Art and Culture “Sharing Art with All and Nurturing Its Growth”

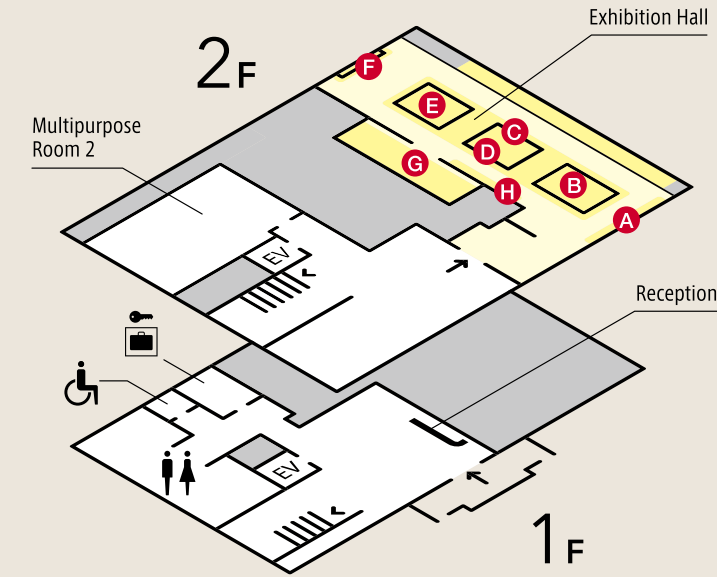
Ishibashi Shojiro’s passion for art collecting was sparked by his encounter with Sakamoto Hanjiro, an artist from Kurume. Today, the Ishibashi Foundation Collection carries on his vision by offering the joy of art to broader communities.

### Audio Guide

This audio guide introduces Ishibashi Shojiro's work and achievements, focusing on his cultural activities. Scan the QR code in the museum to connect to the dedicated Wi-Fi for the audio guide (Jpn / Eng / SC / TC / Kor).

\*Please use earphones or keep smartphone volume low in the Exhibition Hall.

## Exhibition Hall    Explore the life of Ishibashi Shojiro through multifaceted displays.



**A Wall Exhibition Corner**  
Important archival photographs and materials highlight Ishibashi Shojiro’s achievements through three lenses: Enterprise, Education, and Arts and Culture.



**B The Endeavors of Ishibashi Shojiro**  
He started with split-toe tabi socks, then jikatabi work shoes and rubber-soled shoes before expanding into tires and rubber products. Displays including models and vintage ads reveal how his business grew.



**C Ishibashi Cultural Center: Growing with the Times**  
The Ishibashi Cultural Center opened in 1956. This area focuses on the Center, which has evolved over many years while remaining close to the community it serves.



**D Shojiro: trace by keywords**  
Learn about the personality and guiding ideals of Ishibashi Shojiro by tapping keywords appearing across the 55-inch touch screen.



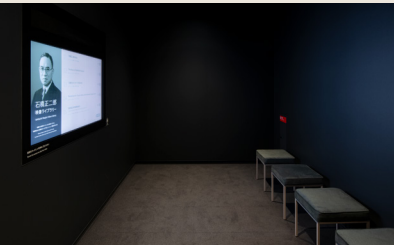
**E Information Library**  
Presenting multimedia materials including 60 years of exhibition catalogs from the Ishibashi Museum of Art, accounts of Ishibashi Cultural Center history, and a variety of records related to Ishibashi Shojiro.



**F Shojiro and the World of Art**  
A large screen shows Ishibashi’s art collection — featuring works by masters such as Aoki Shigeru, Fujishima Takeji, and Cézanne — and looks back on his travels to art museums worldwide.



**G Video Viewing Corner**  
Screening films that document the history of the Ishibashi Cultural Center and Ishibashi Shojiro’s life, work, and contributions to the arts.



**H History of Ishibashi Shojiro**  
A timeline describes his accomplishments as a business leader, beginning with Bridgestone, and his many achievements in cultural promotion.

